

## Warning:

1. Please read the instructions carefully before installing;
2. A qualified electrician must install fixture only;
3. Proper drainage is required to prevent the fixture from soaking in water for a longtime;
4. Turn off power at main switch before installing or maintaining system;
5. Retain these instructions for future maintenance reference.

## Installation steps:

1. Installing pre-embedded sleeve (Figure 1):

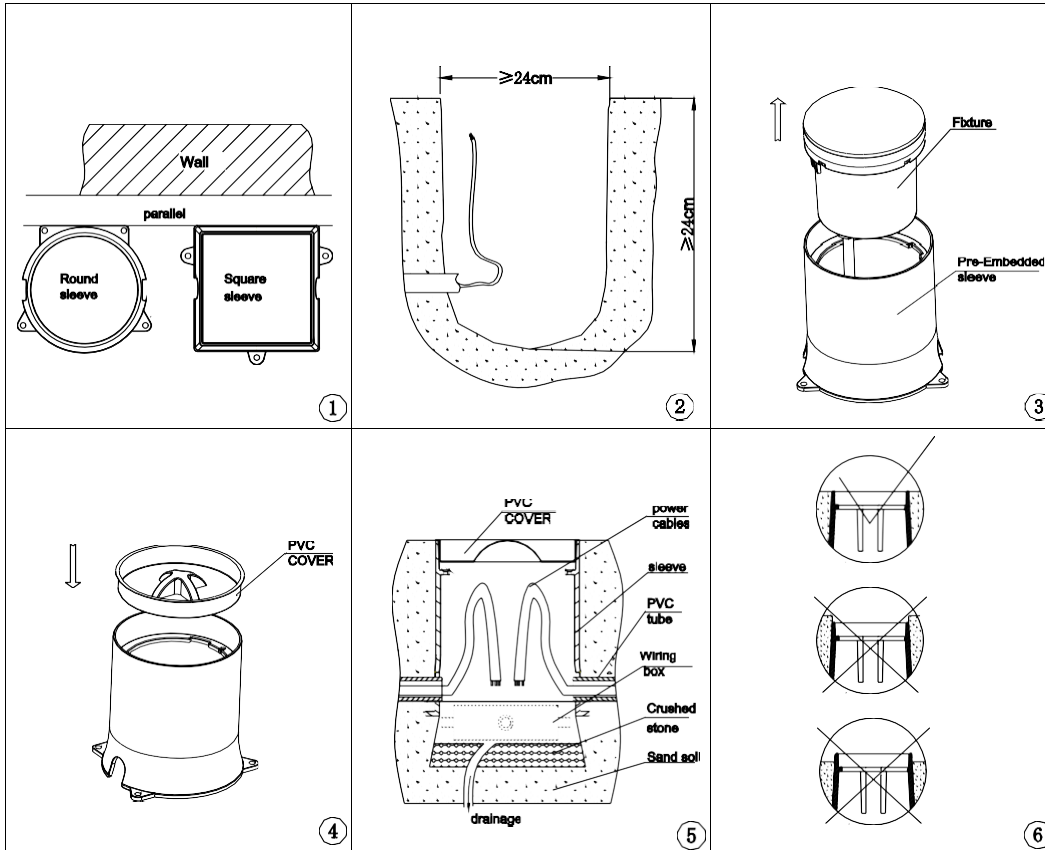


Figure 1

2. Installing accessories (Figure 2), Skip to Step 3 if there is no accessories;

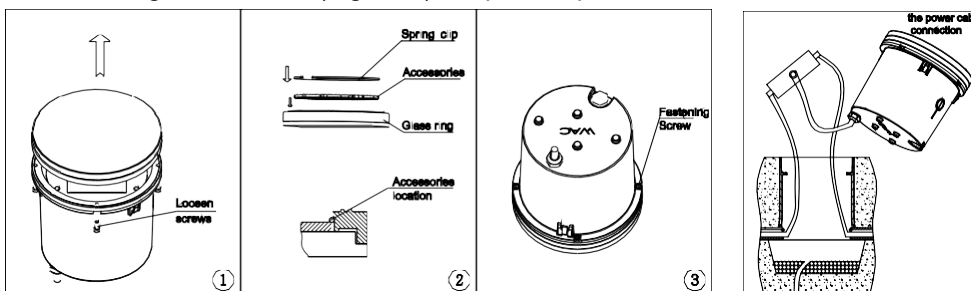


Figure 2

Figure 3

3. Adjusting fixture aiming angle (Figure 4);
4. Assembling fixture into pre-embedded sleeve (Figure 5);

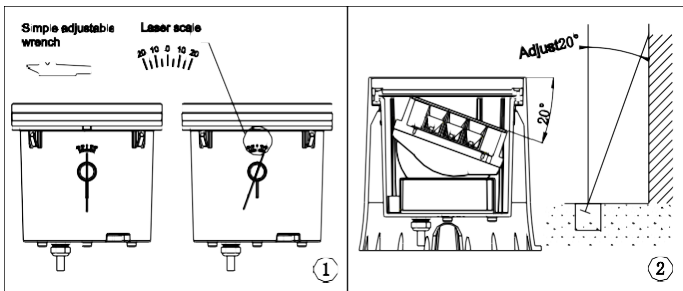


Figure 4

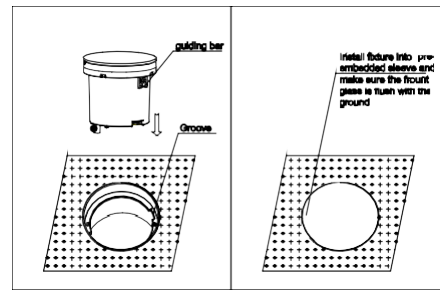
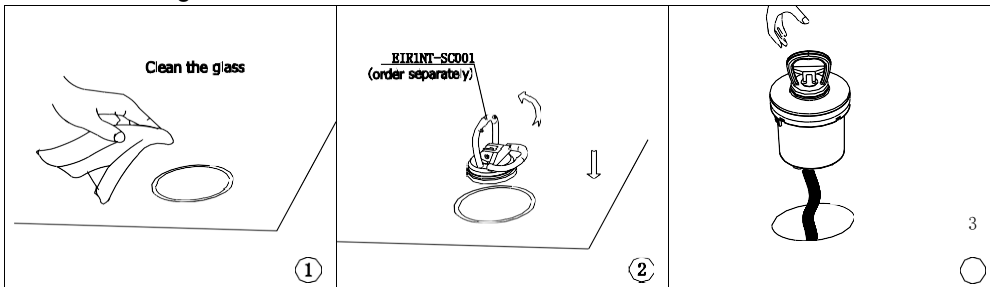


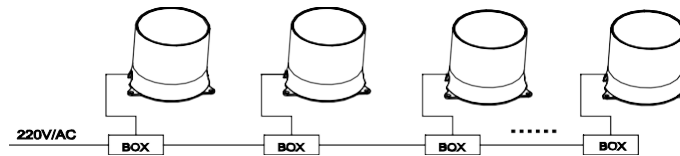
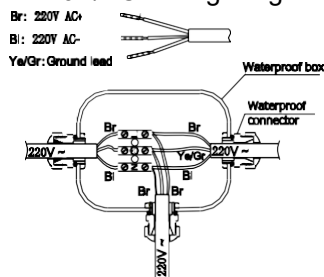
Figure 5

## 5. Fixture cleaning & maintenance:

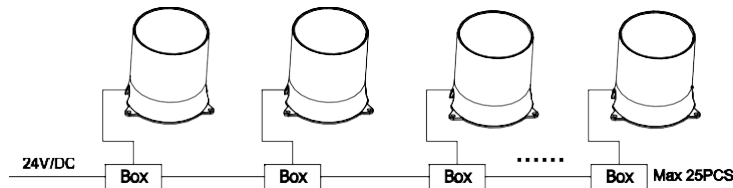
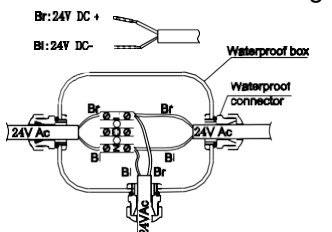


## 6. Fixture external wiring:

### 6.1 220V/AC Wiring Diagram: need to ensure proper waterproof connections;



### 6.2 24V/DC constant voltage wiring diagram:



### 6.3 24V/DC constant voltage DMX512 wiring diagram:

