

Model:

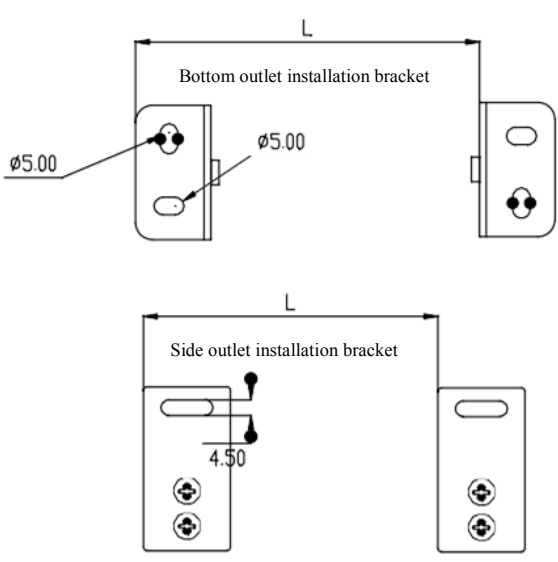
This installation manual is applicable to the ELS203- *, ELS205- *, and ELS210- * series LED outdoor hard strip lights, where "*" includes information on different powers, control systems, light angles, color temperatures, and appearance colors of the lights.

Installation Precautions:

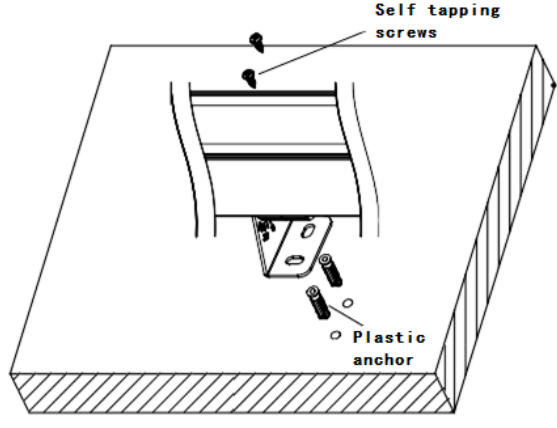
1. Please read the instruction manual carefully before installation;
2. Please hire a professional electrician for installation;
3. To avoid the risk of electric shock, please confirm to turn off the power before installation and maintenance;
4. Before installing the lighting fixtures, please confirm that the installation surface is firm and reliable to prevent the fixtures from falling;
5. Keep the instruction manual for reference only.

Installation method and steps:

1. Rotate and fix the L-shaped stainless steel bracket to a certain angle, with the fixing hole distance of the bracket referring to Fig 1 (self tapping screws and plastic gecko provided by the construction party). The product has two installation methods: bottom outlet and side outlet, and different products can choose different installation methods;
2. Drill holes according to the position of the L-shaped stainless steel bracket, install plastic geckos, and lock the bracket with self tapping screws;
3. To install adjacent light strips, it is necessary to first connect the wires, drill holes, install plastic geckos, and then fix the lamps. The signal wires of the lamps can be connected in series. Please follow the instructions on the labels on the wires for wiring, as shown in Fig 5.



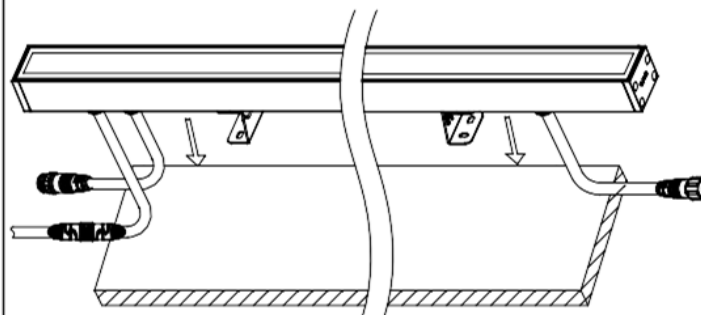
Model	Describe	Scope of L
ELS203-*	LED hard light strip, 300mm long	130-180mm
ELS205-*	LED hard light strip, 508mm long	150-200mm
ELS210-*	LED hard light strip, 1000mm long	450-650mm



Self tapping screws

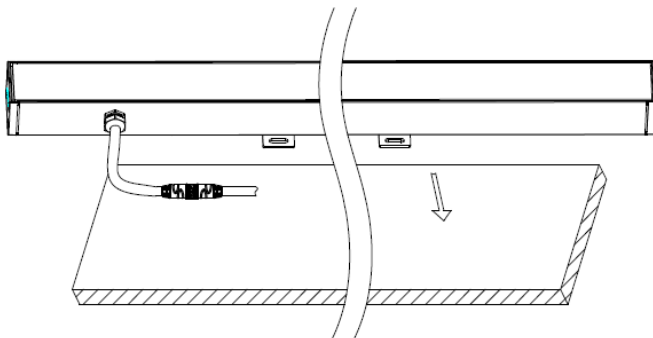
Plastic anchor

②



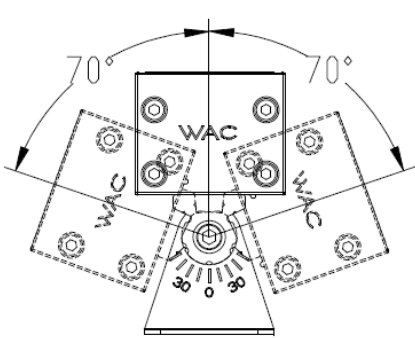
Bottom outlet installation method

③



Side outlet installation method

③

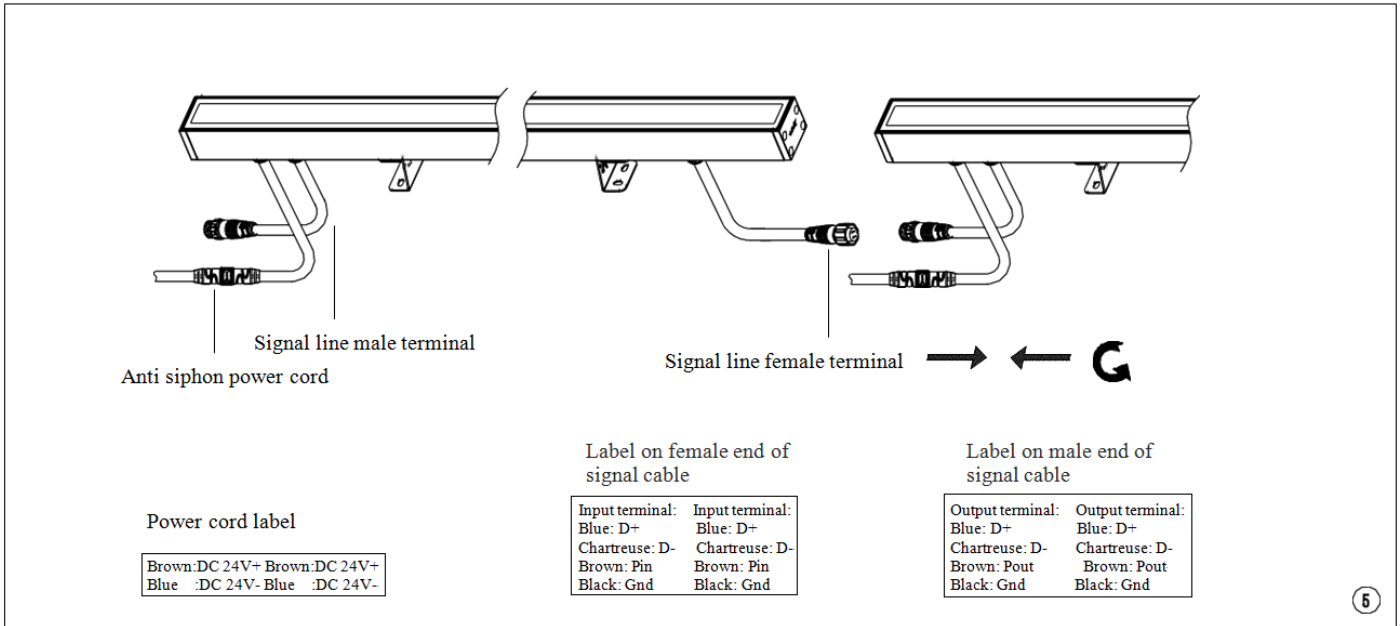


The angle can be adjusted between 0° -70° left and right

④

Licensed by "WAC" trademark holder - WAC LIGHTING, USA

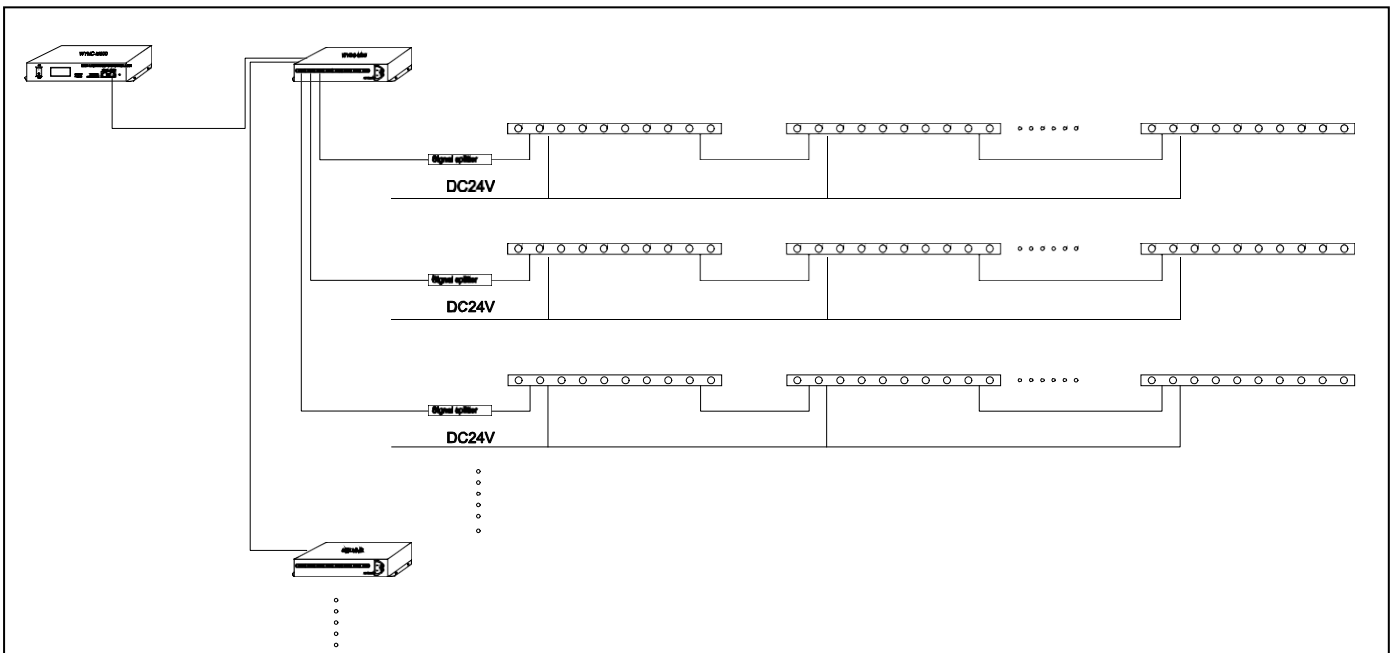
Chinese Marketing Headquarters : WAC Lighting (Shanghai) Co, Ltd.
 Address : 14, L ne 299, Bi Sheng Road, Shanghai 201204, China
 China factory : Manufactured WAC Lighting (Dongguan) Co, Ltd.
 Address : 390, Qingfeng Road, Qingxi Town, Dngguan, Guangdong. Postal code: 523653



Remarks:

It is advisable to have no more than 32 lighting fixtures on each DMA signal amplifier.

4. Wiring method for constant voltage 24V/DC DMX512 dimming lamps



Note: The wire connection must use a waterproof junction box with an IP65 or higher rating. The waterproof joints of the junction box must match the leads of the lighting fixtures. It is recommended that each DMA signal amplifier carry no more than 32 lighting fixtures.